

READYLIFT[®]

SUSPENSIONS

66-1211, 66-1215, 66-1910, 66-1915 RAM 2500 Rear Spacer Lift

IF your ReadyLIFT[®] product has a damaged or missing part, please contact customer service directly and a new replacement part will be sent to you immediately. For warranty issues, please return to the place of installation and contact ReadyLIFT.

(877) 759-9991

MON-FRI 7AM-4PM PST

OR

EMAIL: support@readylift-ami.COM

WEBSITE: ReadyLIFT.COM

****Please retain this document in your vehicle at all times.****

READYLIFT "NO HASSLE" PRODUCT WARRANTY

This unique "no hassle" product warranty proves our commitment to the quality of every product the ReadyLIFT produces. ReadyLIFT product warranty only extends to the Original Purchaser of any ReadyLIFT product. If it breaks, we will give you a new part.

READYLIFT "NO HASSLE" WARRANTY PROCEDURES

Any ReadyLIFT products containing missing or defective components will be covered under warranty by ReadyLIFT. Please call 800-549-4620 to initiate a warranty claim. Rest assured our customer service team will urgently address the matter and expedite the replacement parts. In the event of a defective product, ReadyLIFT may request a return of the defective product (at ReadyLIFT's expense) so the quality team can analyze the nature of the defect. Returning defective product will not delay the replacement part delivery.

ReadyLIFT leveling kit, block kits, and lift kit products are NOT intended for off-road abuse. Any abuse or damage as a result of off-road use voids the warranty of the ReadyLIFT product. Exception: ReadyLIFT Jeep SST and Terrain Flex Lift Kits are designed for normal off-road use to compliment the Jeep vehicle's off-road capability. All Jeep Lift Kit products are covered under warranty when used in recreational off-road environments.

Warranty does not apply to discontinued, clearance or outlet products. Wearable components including but not limited to, shocks, ball joints, heim joints, bushings, and steering extensions, are covered for up to 1-year. Labor, installation, surcharges or any other applicable fees from the original purchase are non-refundable. ReadyLIFT is not responsible for any consequential damage to the vehicles.

ReadyLIFT reserves the right to change, modify, or cancel this warranty without prior notice.



READ INSTRUCTIONS THOROUGHLY AND COMPLETELY BEFORE BEGINNING INSTALLATION.

INSTALLATION BY A CERTIFIED PROFESSIONAL MECHANIC IS HIGHLY RECOMMENDED.

READYLIFT® IS NOT RESPONSIBLE FOR ANY DAMAGE OR FAILURE RESULTING FROM IMPROPER INSTALLATION.

Safety Warning

MISUSE OF THIS PRODUCT COULD LEAD TO INJURY OR DEATH.

Suspension systems or components that enhance the on and off-road performance of your vehicle may cause it to handle differently than it did from the factory. Extreme care must be used to prevent loss of control or vehicle rollover during abrupt maneuvers.

Always operate your vehicle at reduced speeds to ensure your ability to control your vehicle under all driving conditions. Failure to drive safely may result in serious injury or death to driver and passengers.

Driver and passengers must ALWAYS wear your seat belts, avoid quick sharp turns and other sudden maneuvers. ReadyLIFT Suspension does not recommend the combined use of suspension lifts, body lifts, or other lifting devices.

You should never operate your vehicle under the influence of alcohol or drugs.

Constant maintenance is required to keep your vehicle safe. Thoroughly inspect your vehicle before and after every off-road use.

It is the responsibility of the retailer and/or the installer to review all state and local laws, with the end user of this product, related to bumper height laws and the lifting of their vehicle before the purchase and installation of any ReadyLIFT products.

It is the responsibility of the driver/s to check their surrounding area for obstructions, people, and animals before moving the vehicle.

All raised vehicles have increased blind spots; damage, injury and/or death can occur if these instructions are not followed.

Installation Warning

All steps and procedures described in these instructions were performed while the vehicle was properly supported on a two post vehicle lift with safety jacks.

Use caution during all disassembly and assembly steps to insure suspension components are not over extended causing damage to any vehicle components and parts included in this kit.

Included instructions are guidelines only for recommended procedures and are not meant to be definitive. Installer is responsible to insure a safe and controllable vehicle after performing modifications.

ReadyLIFT Suspension recommends the use of an OE Service Manual for model/year of vehicle when disassembly and assembly of factory and related components.

Unless otherwise specified, tighten all bolts and fasteners to standard torque specifications listed within the OE Service Manual.

Suspension components that use rubber or urethane bushings should be tightened with the vehicle at normal ride height. This will prevent premature wear or failure of the bushing and maintain ride comfort.

Larger tire and wheel combinations may increase leverage on suspension, steering, and related components.

Due to payload options and initial ride height variances, the amount of lift is a base figure. Final ride height dimensions may vary in accordance to original vehicle ride height. Always measure the vehicle ride height prior to beginning installation.

IMPORTANT NOTE:

Kit not compatible with aftermarket lift springs or other lift systems. Use of additional lift components will damage vehicle.

VEHICLE HEIGHT MEASUREMENTS

	Driver Before	Driver After	Passenger Before	Passenger After
Front				
Rear				

BILL OF MATERIALS

Rear Spring Spacer	2

WARNING

Before starting installation: ReadyLIFT Suspension highly recommends that the installation of this product be performed by a professional mechanic with experience working on and installing suspension products. Professional knowledge and skill will typically yield the best installation results. If you need an installer in your area, please contact ReadyLIFT Suspension Customer Service to find one of our "Pro-Grade" Dealers.

INSTALLATION BY A PROFESSIONAL IS HIGHLY RECOMMENDED.

- A Factory Service Manual for your specific Year / Make / Model is highly recommended for reference during installation.
- All lifted vehicles may require additional driveline modifications and / or balancing.
- A vehicle alignment is REQUIRED after installation of this product.
- Speedometer / Computer recalibration is required if changing +/- 10% from factory tire diameter.
- A vehicle lift or hoist greatly reduces installation time. Installation time estimates are based on an available vehicle hoist.
- Vehicle must be in excellent operating condition. Repair or replace any and all worn or damaged components prior to installation.

*****Parts shown in red for picture clarification only*****

ReadyLIFT recommends all steps and procedures described in these instructions be performed while the vehicle is properly supported on a two post vehicle lift with safety jacks. Otherwise, park vehicle on a clean flat surface and block the rear wheels for safety. Engage the parking brake.

Disconnect the vehicle power source at the ground terminal on the battery.

Lock the steering wheel in the straight forward position with the column lock or steering wheel locking device.

Block the front wheels for safety and raise the rear of the vehicle. Place jack stand under the frame rails in front of the rear lower control arm links.

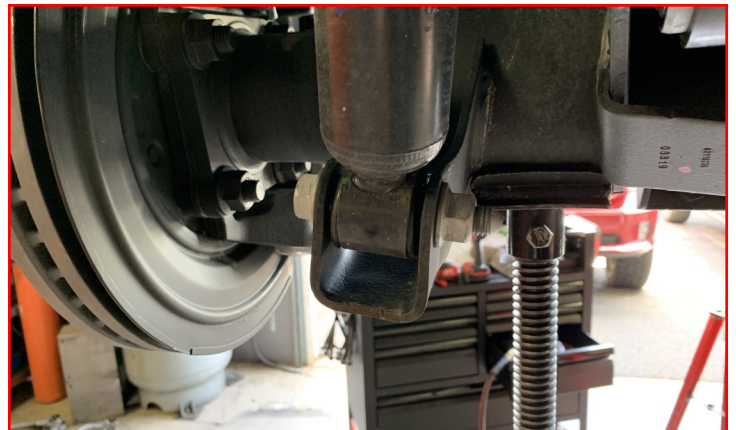
Place a jack under the axle for support. Remove the rear wheels.

Remove the sway bar end links from the frame. Retain the factory hardware.

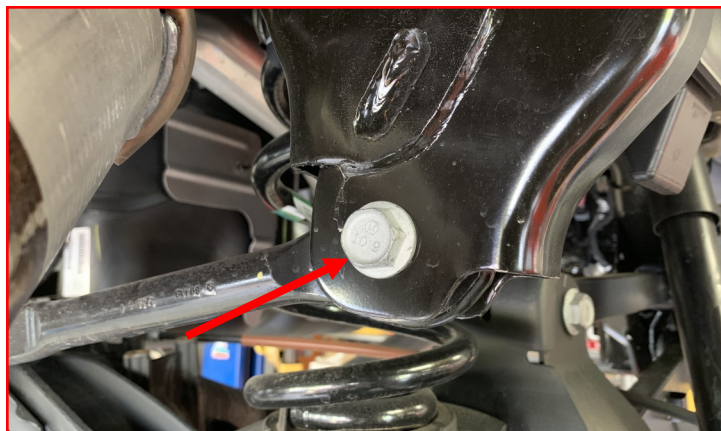


Note: Ensure axle is supported properly.

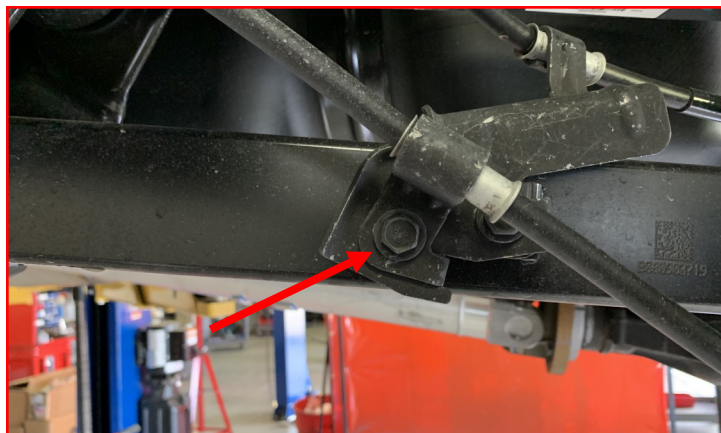
Remove the axle side shock mounting bolts. Retain factory hardware.



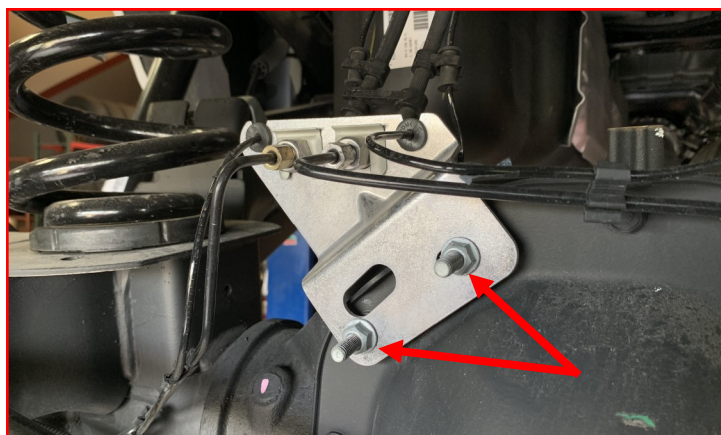
Loosen the track bar at the axle and frame mounts but do not remove.



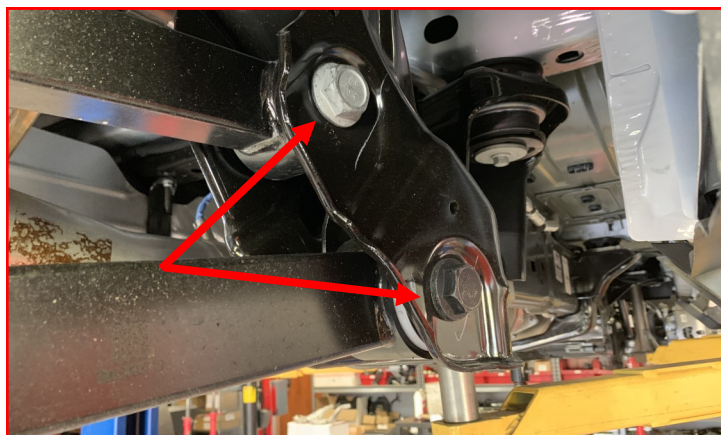
Remove **parking brake bracket mounting bolts** from the lower control arm on the driver side. Retain the hardware.



Remove brake line bracket from axle. This will allow the ABS sensor harness and brake line to have slack when lowering the axle. Be sure to save hardware.



Loosen but do not remove the **upper and lower control arm bolts** on the axle and the frame pockets.



Lower the axle just enough to remove the springs.



Install the coil spring with **coil spring spacer** and isolator. Raise the axle high enough to keep springs and spacers in place.



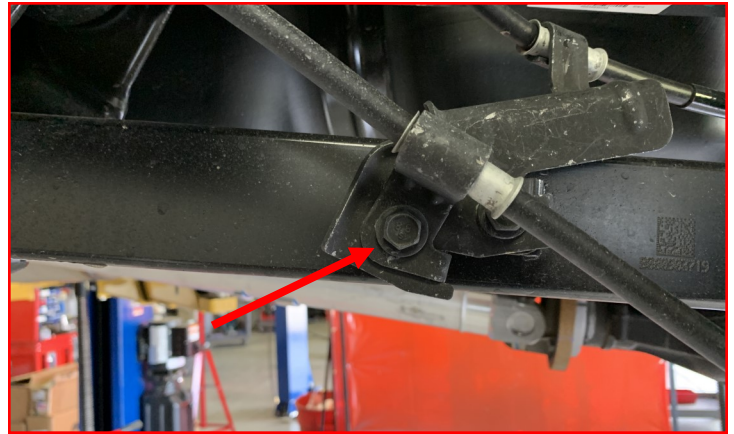
Install the shocks onto the axle using factory hardware. Do not tighten at this time.



Install the sway bar end links to the frame using **the factory hardware**.

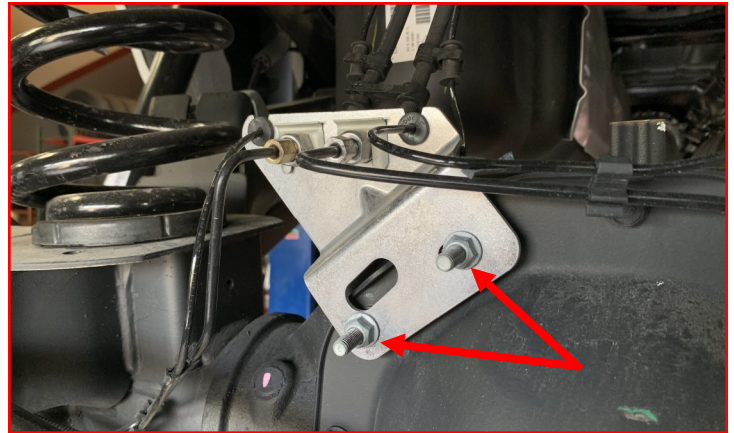


Install the **parking brake bracket** the lower control arm on the driver side using the factory hardware.



Install the brake line bracket to the axle using the factory mounting hardware.

Torque hardware to **15 ft-lbs**.



*****Note: Some models have a torque shock located on the differential. This will need to be removed for the function of this kit. *****



Install the rear wheels and lower vehicle to the ground. Torque the lug nuts to the wheel manufacturer specs.

Torque the lower shock bolts to **90 ft-lbs**, sway bar end links to **45 ft-lbs**, parking brake bracket to **10 ft-lbs**, track bar mounting bolts to **100 ft-lbs** and the upper and lower control arm bolts to **200 ft-lbs**.

With everything tightened and torqued to specifications, attach the vehicle negative power source.



FAILURE TO PERFORM THE POST INSPECTION CHECKS MAY RESULT IN VEHICLE COMPONENT DAMAGE AND/OR PERSONAL INJURY OR DEATH TO THE DRIVER AND/OR OTHERS.

Final Checks & Adjustments

Once the vehicle is lowered to the ground, check all parts which have rubber or urethane components to ensure proper torque. Torque lug nuts to the wheel manufacturer specs. Move vehicle backwards and forwards a short distance to allow suspension components to adjust. Turn the front wheels completely left then right and verify adequate tire, wheel, brake line, and ABS wire clearance. Test and inspect steering, brake and suspension components for tightness and proper operation. Inspect brakes hoses and ABS lines for adequate slack at full extension, adjust as necessary.

RECHECK ALL HARDWARE FOR PROPER TORQUE VALUES AFTER 500 MILES, AND THEN PERIODICALLY AT EACH SERVICE INTERVAL THERAFTER.

Vehicle Handling Warning

Increasing the height of your vehicle raises the center of gravity and can affect stability and control. Use caution on turns and when making steering corrections.

Vehicles with larger tires and wheels will handle differently than stock vehicles. Take time to familiarize yourself with the handling of your vehicle.

Wheel Alignment/Headlamp Adjustment

It is necessary to have a proper and professional wheel alignment performed by a certified alignment technician. Align the vehicle to factory specifications. It is recommended that your vehicle alignment be checked after any off-road driving.

In addition to your vehicle alignment, for your safety and others, it is necessary to check and adjust your vehicle headlamps for proper aim and alignment. If the vehicle is equipped with active or passive safety/collision monitoring and/or avoidance systems including, but not limited to, camera- or radar-based systems, check and adjust your vehicle's systems for proper aim and function.